



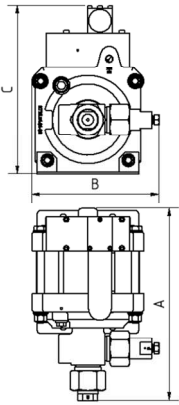
## Technical Data Sheet

G250 (L)

» Oil service

G250 (L) VE

» Water service



G250 (L)  
single acting, single air drive head, side inlet  
(Standard= Bottom inlet, see dimension drawing)

### Technical Data:

Air drive pressure:	1 - 10 bar / 14.5 - 145 psi
Calculated working pressure:	2650 bar / 38425 psi
Pressure ratio:	1:265
Displacement volume/double stroke:	3.8 cm <sup>3</sup> / 0.23 cu.inch

### Connections:

Inlet:	Standard: Bottom Inlet 1/2" BSP
Outlet:	9/16-18UNF
Air drive:	3/4" BSP
Maximum operating temperature:	60°C
Net weight:	13.5 kg

Pressure and flow performances, please see enclosed graph.

### Wetted materials of construction:

Seal package:	G250(L): Polyurethane, NBR G250(L)VE: UHMWPE, NBR
Pump Body:	1.4313
Piston:	1.4542
Fittings:	G250(L): Inlet: 1.4122 Outlet: 1.4542 G250(L)VE: Inlet: 1.4305 Outlet: 1.4542

### Approximate Dimensions:

A:	312 mm
B:	205 mm
C:	272 mm

### Available Options:

Seal material for oil service:	G250 (L)
Seal material for water service:	G250(L)VE
Side inlet:	G250(L)S/ G250(L)VES
Special inlet and outlet ports, i.e. NPT:	G250(L)-NPT G250(L)VE-NPT

Special seal material to handle special fluids on request.

### Available Accessories:

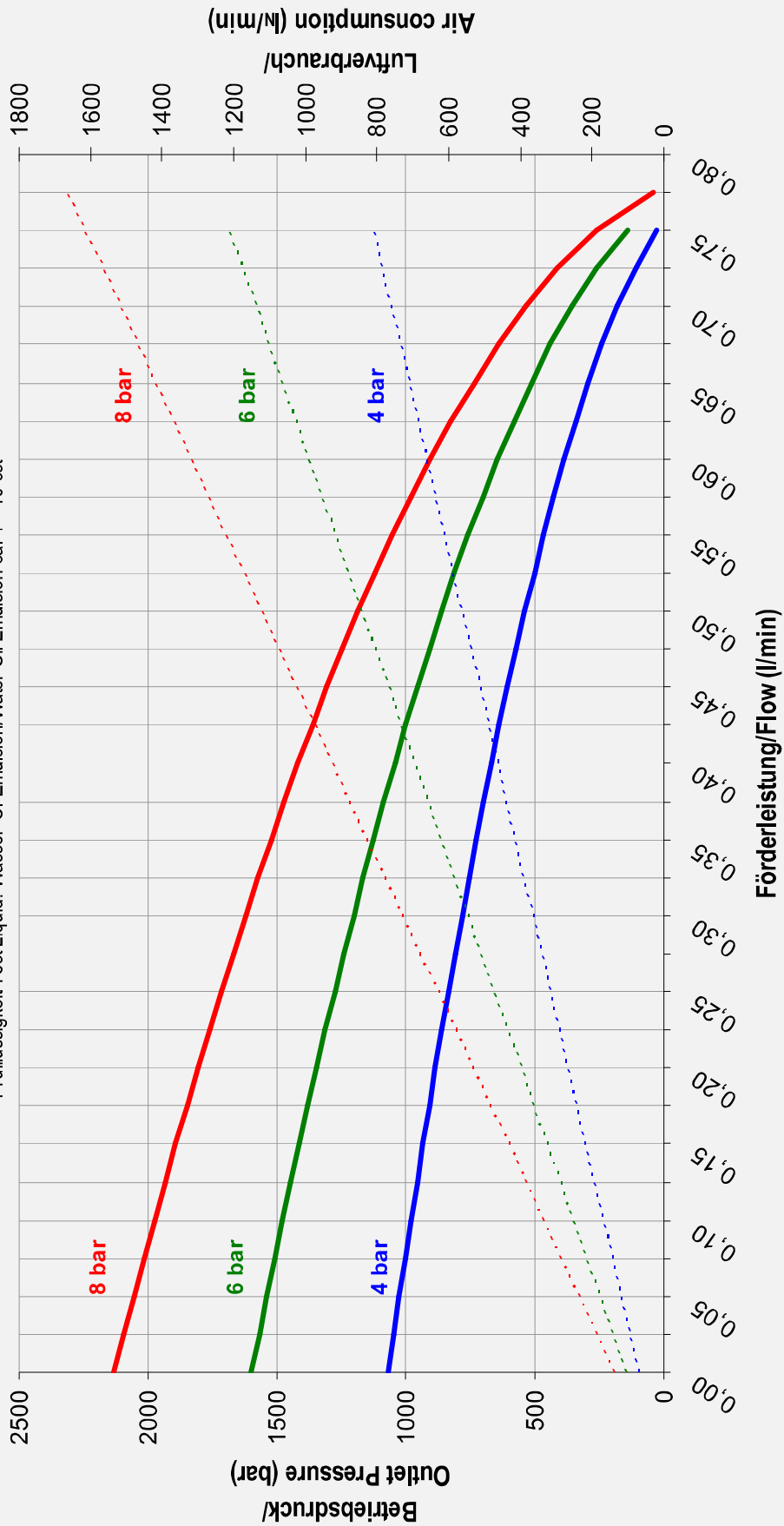
Air control units with filter pressure regulator, control pressure gauge and shut off valve:	G250(L) with C2
To protect the pump against excessive outlet pressures or to limit the outlet pressure, a safety valve can be fitted to the air control unit in the air drive line.	G250(L) with C2/SV-air (The required outlet pressure has to be indicated.)

**Please consult factory for more information.** All technical and dimensional information subject to change. All General Terms and Conditions of sale, including limitations of our liability, apply to all products and services sold.



# Leistungsdiagramm/Performance Graph G 250

Prüfflüssigkeit/Test Liquid: Wasser-Öl-Emulsion/Water Oil Emulsion ca. 1 - 10 cst



- Betriebsdruck bei/Outlet Pressure at 4 bar
- Betriebsdruck bei/Outlet Pressure at 8 bar
- Betriebsdruck bei/Outlet Pressure at 6 bar
- - - Luftverbrauch bei/Air consumption at 4 bar
- - - Luftverbrauch bei/Air consumption at 8 bar
- - - Luftverbrauch bei/Air consumption at 6 bar